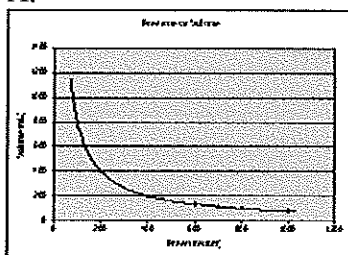


## Types of graphs quiz

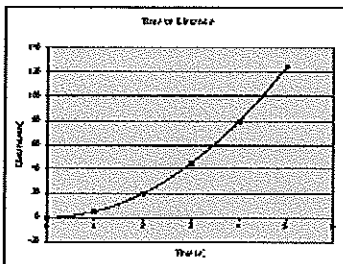
### Problem

1. For each of the following graphs:
  - a. state the type of relationship it represents-
  - b. state the general equation for the relationship-
  - c. state the type of trendline Excel would use to produce this graph-

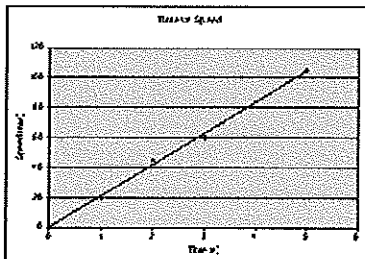
A.



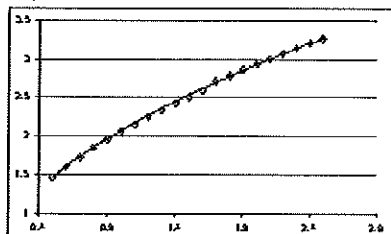
B.



C.



D.



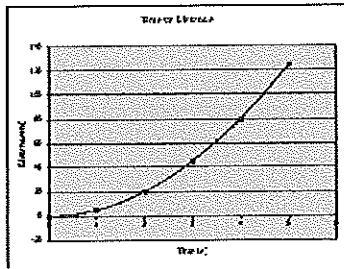
(12 marks)

## Types of graphs quiz

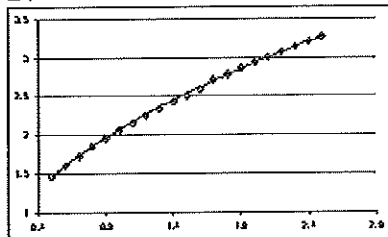
### Problem

1. For each of the following graphs:
  - a. state the type of relationship it represents-
  - b. state the general equation for the relationship-
  - c. state the type of trendline Excel would use to produce this graph-

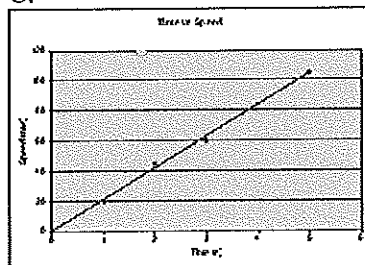
A.



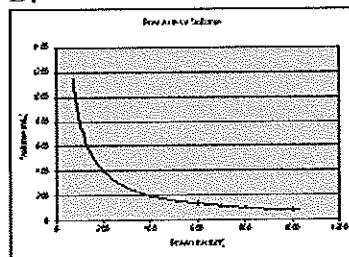
B.



C.



D.



(12 marks)

**Types of graphs quiz**  
**Answer Section**

**PROBLEM**

1. ANS:

A. a. inverse, b.  $y = k / x$  c. power ( $x^{-1}$ )

B. a. parabolic, b.  $y = k x^2$ , c. polynomial (order = 2)

C. linear, b.  $y = kx$ , c. linear

D. root, b.  $y = k \sqrt{x}$ , c. power ( $x^{0.5}$ )

PTS: 12

OBJ: A2

KEY: types of graphs

**Types of graphs quiz**  
**Answer Section**

Ver 2

**PROBLEM**

1. ANS:

A. a. parabolic, b.  $y = kx^2$ , c. polynomial (order = 2)

B. a.  $\sqrt{x}$ , b.  $y = k\sqrt{x}$ , c. power ( $x^{0.5}$ )

C. a. linear, b.  $y = kx$ , c. linear

D. a. inverse, b.  $y = k/x$ , c. power ( $x^{-1}$ )

PTS: 12

OBJ: A2

KEY: types of graphs